


**Special Features**

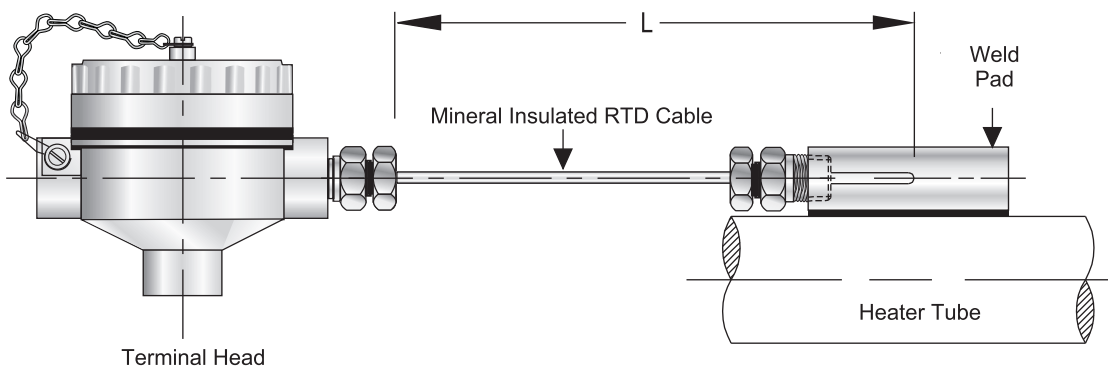
- Mineral insulated cable.
- Available in various connections & sheath diameters
- Enclosures (Head)
  - Weatherproof IP - 67
  - Flameproof Gr. IIA, IIB
  - Explosion proof IIA, IIB, II C
- Transmitter output 4 - 20 mA (Optional)
- Reference Standard : IEC - 751 / DIN 43760

**Application**

- This design is specifically used to measure skin temperature of heater tube or flat surface.
- Our thermocouple assembly will be with weld pad which will be directly welded on heater tube or flat surface.
- Curvature to weld pad will be provided as required by customer.
- Typical applications are measurement of surface temperature of refractory lined vessels, columns, reactors in petrochemical plants and oil refineries and pipelines.

**Specifications**
**Standard Version**

No of element	:	Simplex
Element type	:	Pt - 100
Range	:	-70 till 500°C
Accuracy	:	Class 'B' tolerance as per IEC - 751 / DIN 43760
Wire configuration	:	3 Wire system
Sheath diameter	:	6.0 mm
Sheath material	:	SS 316
Terminal head type	:	Screwed type, weatherproof, IP-65 in Die Cast Aluminum
No of conduit entry	:	Two
Conduit entry size	:	3/4" ET(F)
Mounting type	:	Bracket mounting for head
Weld pad size	:	50 x 25 x 25 mm
Weld pad type	:	Flat surface
Weld pad material	:	SS 316
Total length "L" mm	:	1000 mm.
Tag plate	:	SS Tag plate

**Dimensional Details**


Notes : • Drawings are not to scale. • All Dimensions are in mm.

How To Order	Example	How To Order	Example
<b>Basic Model</b>	R04	<b>Weld Pad Size (L x W x H)</b>	
<b>Optional Extras</b>		1 50 x 25 x 25 mm (Standard)    3 100 x 50 x 50 mm	X
<b>No of Element</b>		2 100 x 25 x 25 mm Other, Please Specify	
<b>Element Type</b>		<b>Round Integral Collar Size (OD x ID x Thk), SS 316</b>	
1 Simplex (Standard)	X	1 30 x 19 x 10 mm                    3 50 x 19 x 10 mm	X
2 Duplex		2 40 x 19 x 10 mm                    4 Not applicable	
<b>Element Type</b>		Other, Please Specify	
<b>P1</b> Pt- 100 (Standard)		<b>Weld Pad / Collar Material</b>	
<b>P2</b> Pt- 500	X	1 SS 316 (Standard)                  2 SS 310	X
<b>P3</b> Pt - 1000		<b>Weld Pad Type</b>	
<b>Range</b>		Specify OD of pipe in mm	50 mm
<b>C</b> -70 till 500°C	X	<b>Total Length</b>	
<b>Accuracy</b>		L - Specify in mm.	1000 mm
<b>A</b> Class 'A' (-70 till 300°C) For any range beyond this, consult factory.	X	<b>Other Options</b>	
<b>B</b> Class 'B' (Standard)		13 Head mounted Temperature transmitter(4-20 mA)	
<b>Wire Configuration</b>		14 SS Base plate suitable for temperature transmitter	
2 2 Wire system                    3 3 Wire system (Standard)	X	21 Plug for conduit entry in carbon steel	
4 4 Wire system			22 Plug for conduit entry in SS 304
<b>Sheath Diameter</b>		23 Plug for conduit entry in SS 316	
03 3.0 mm*    06 6.0 mm (Standard)	XX	32 S. C. cable gland in Nickel plated Brass - WP	
05 4.5 mm    08 8.0 mm			33 D. C. cable gland in Nickel plated Brass - WP
<small>* For 3mm Sheath Dia Duplex can not be offered Up to 10mm OD MI cable and for above it protecting tube will be provided.</small>		34 S. C. cable gland in SS 304 - WP	XX
<b>Sheath Material</b>		35 D. C. cable gland in SS 304 - WP	
1 SS 316 (Standard)    2 SS 316L	X	36 S. C. cable gland in SS 316 - WP	
<b>Terminal Head Type</b>		37 D. C. cable gland in SS 316 - WP	
<b>F</b> Screwed type, Flameproof, IP-67, Gr. IIA IIB in Die Cast Aluminum		39 D. C. cable gland in Nickel plated Brass - FLP	
<b>E</b> Screwed type, Explosion proof, IP-67, Gr. IIC in Die Cast Aluminum		41 D. C. cable gland in SS 304 - FLP	
<b>H</b> Hinged type, Weatherproof, IP-67 in Die Cast Aluminum	X	43 D. C. cable gland in SS 316 - FLP	
<b>B</b> Weatherproof Head, IP-67 in Die-cast Aluminum		44 Plug for conduit entry in AL	
<b>A</b> Screwed type, weatherproof, IP-65 in Die Cast Aluminum (Standard)		45 D. C. cable gland in Nickel plated brass-Ex proof	
3 Terminal head in SS 304 - WP, IP-67		46 D. C. cable gland in SS304--Ex proof	
4 Terminal head in SS 316 - WP, IP-67		47 D. C. cable gland in SS316--Ex proof	
<small>* For other option contact factory</small>		<b>FC</b> Fixed Threaded Connection	
<b>No of Conduit Entry / Entries</b>		<b>AC</b> Adjustable Threaded Connection	
1 One entry (Standard)	X	<b>PW</b> Calibration Certificate	
2 Double entry			<b>SX</b> SS Tag Plate
<b>Conduit Entry Size</b>			
<b>A</b> 3/4" ET (Standard) <b>B</b> 1/2" NPT(F)	X		
<b>Mounting Type</b>			
<b>S</b> Surface Mounting For JB			
<b>B</b> Bracket Mounting For Head (Standard)	X		
<b>P</b> 2"NB Pipe Mounting Bracket			
<b>L</b> Local Mounting Without Bracket			

**Note :**

- When selecting option "PW", please also specify temp. Points at which calibration is to be carried out .
- Explanations of Abbreviations used:

SC = Single Compression      DC = Double Compression      SS = Stainless Steel  
 WP = Weatherproof              FLP = Flameproof

**Ordering Example : R04 . X . X . X . X . X . XX . X . X . X . X . X . X . X . X . 50mm . 1000mm . XX**
**Note :** Specifications and dimensions given in this product catalogue represents the state of engineering at the time of printing . Modifications may take place and materials specified may be replaced by others without prior notice.